

TELESANO TU-900

Digital Ultrasonic Diagnostic Imaging System

USG 2 Dimensi	
Digital Grayscale	
Layar : 12.1 TFT -LCD	
DICOM 3.0	
Peripheral ports:	
S-video output: 1	
Video output: 1	
VGA output: 1	
USB port: 2	
Ethernet port: 1	
Daya Listrik : 100V -240V ~ 50Hz/60Hz	
Baterai lithium: Dapat bertahan sampai dengan 2 jam	
Dimensi Alat: Panjang X Lebar X Tinggi = 330 mm x 220 mm x 320 mm	
Berat Alat : 7.1kg	
Mode Gambar: B, 2B, 4B, B+M, M, and PW Gray scale levels: 256	
Layar : 12.1 TFT -LCD Transducer frequency: 2.0-10.0MHZ	
Transducer connector: 2 standard Aplikasi	
Pemakaian: Abdomen, obstetrics, gynecology,	
Measurement & Calculation:	
B-mode:	GS, CRL, BPD, HC,FL Gestational Age, EDD/ expected date of delivery/EDC/estimated date of confinement ratio % stenosis, histogram, and angle
M-mode:	Distance, time, slope, and heart rate
Doppler:	Time, heart rate, velocity, acceleration, trace, and RI
Software packages:	
General, obstetric, gynecology, small parts, orthopedics, cardiology, peripheral vascular and urology	
Imaging Processing:	
Pre- Processing:	Dynamic Range Frame Persist Gain 8-segment TGC adjustment IP (Imaging Process)
Post- Processing:	Gray map Speckle ReductionTechnology Pseudo-color Gray Auto Control Black/white invert Left/right invert Up/down invert
display:	date, time, probe frequency, frame rate, patient name, patient ID, hospital name, Depth, Frame rate, Exam type
konfigurasi standar:	
TU-900 unit utama	
Convex array transducer 3.5 MHz	
Inkjet printer	
Li-ion battery	
Mobile trolley	
Hand-carry bag	
sertifikat kalibrasi	
garansi 2 tahun	
video tutorial	

Diproduksi oleh :
PT. PRADANA SIRONA PERSADA
Jl. Gatot Subroto KM 7, Kota Tangerang
Banten 15136- Indonesia

Didistribusikan oleh :
PT. BUMI PERMATA MEDIKA
Metro Permata I Blok L.2 No. 5,
Kel. Parung Jaya, Kec. Karang Tengah,
Kota Tangerang, Banten
KEMENKES RI AKD 21101220012



▣ Teknologi yang kuat untuk keyakinan diagnosa

- ▣ PW Doppler supplies more hemodynamics information
- ▣ Five-frequency transducers increase versatility

▣ Dapat dibawa kemana saja

- ▣ Compact and lightweight design facilitates mobility
- ▣ Built-in battery provides up to two hours of imaging
- ▣ Large capacity data storage

▣ Mudah dioperasikan

- ▣ One touch image optimization via smart image processing key
- ▣ Backlit, easy-to-use control panel
- ▣ User-defined keys to customize your work-flow

▣ Practical tools enhance efficiency

- ▣ Intelligent 8-segment TGC for precise adjustment
- ▣ Multi-format data transfer via USB and DICOM
- ▣ Multiple-pseudo-color options enhance image presentation



PT. BUMI
PERMATA
MEDIKA



Metro Permata I Blok L.2 No. 5,
Kel. Parung Jaya, Kec. Karang Tengah,
Kota Tangerang, Banten
Telp. 0217334739

www.telesano.co.id

Call Centre : +6281992399900

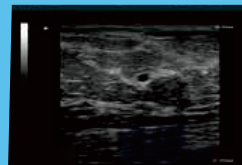


Diproduksi oleh :
PT. PRADANA SIRONA PERSADA
Jl. Gatot Subroto KM 7, Kota Tangerang
Banten 15136- Indonesia

Didistribusikan oleh :
PT. BUMI PERMATA MEDIKA
Metro Permata I Blok L.2 No. 5,
Kel. Parung Jaya, Kec. Karang Tengah,
Kota Tangerang, Banten



36 Week Placenta/Cord



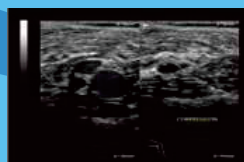
Breast Cyst



Liver/Kidney



Ovary



Popliteal Vein/Artery



Testicle



Transverse Pancreas



Uterine Fibroid